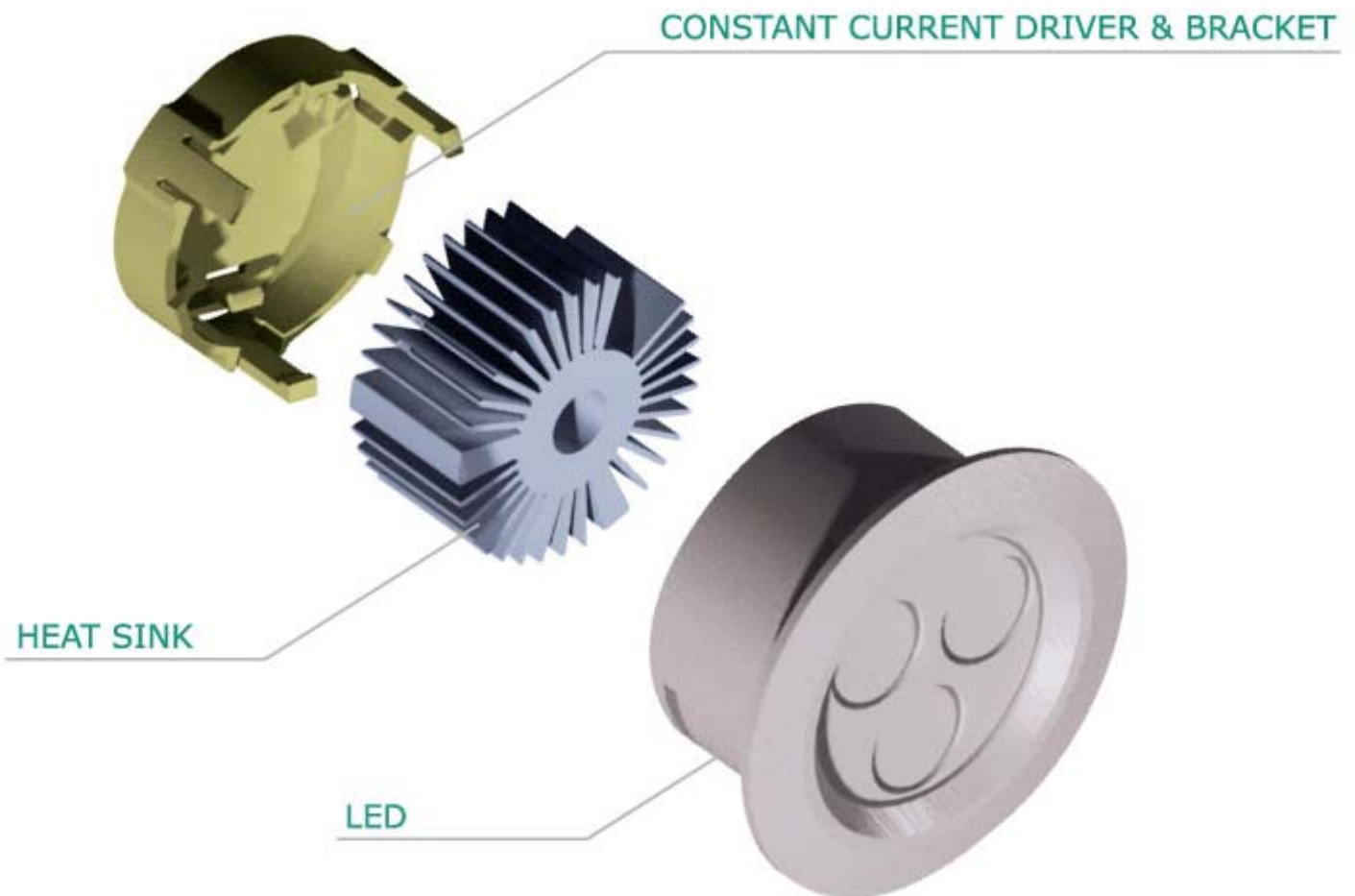




LED DOWNLIGHT

EL3 LED Downlight - Green Illumination

ECI's EL3 LED downlight composed with 3 high power LEDs, aluminum housing, precise focus lens and a constant current driver to ensure that the LEDs run at their specified power rating and achieve their long life expectancy. The EL3 LED downlight is UV free, making it ideal for illuminating photographs and paintings in retail and residential applications.



Ordering Information

ITEM NO.	EDL-1003-W	EDL-3003-W
Outline Dimension	77mm (dia) X 64mm (L)	77mm (dia) X 88mm (L)
Light Source	1W x 3 High Power LED	3W x 3 High Power LED
Input Voltage Range	12 - 32 Vac / Vdc	
Power Consumption	5W max	10W max
Operation Temperature	-20°C ~ 70°C	

The EL3 LED Downlight is designed for recessed mounting, powered by a 24 volt DC/AC power source in typical installations. A ready-to-install kit is available for ordering, which contains 3 LED Downlights, Plug-in 24Vac power adaptor, installation template for recessed mounting, quick-splices connectors, and instructions for easy installation.

Features and Benefits

- Long Life: Average Lifespan 50,000 Hours
- Cool Operation: <40 °C
- Energy Efficient
- Absence of UV / IR
- Light Source: 3 X 1W / 3 X 3W High Power LED
- Integrated & Built-in Constant Current Driver
- Reversed power input polarity protection
- Plug & socket User-friendly Connections
- Aluminum Anodized Housing
- Dimming Option Available

Specification

- Outline Dimension: Refer to Ordering Information
- Light Source: 1W X 3 or 3W X 3 High Power LEDs
- Input Voltage: 12 - 32 Vac / Vdc
- Power Consumption: 5W Max / 10W max
- Operation Temperature: -20°C ~ 70°C
- Storage Ambient Temperature: -30°C ~ 80°C
- Relative Humidity: 0% ~ 95% non-condensing

Specifications subject to changes/variations without prior notice.

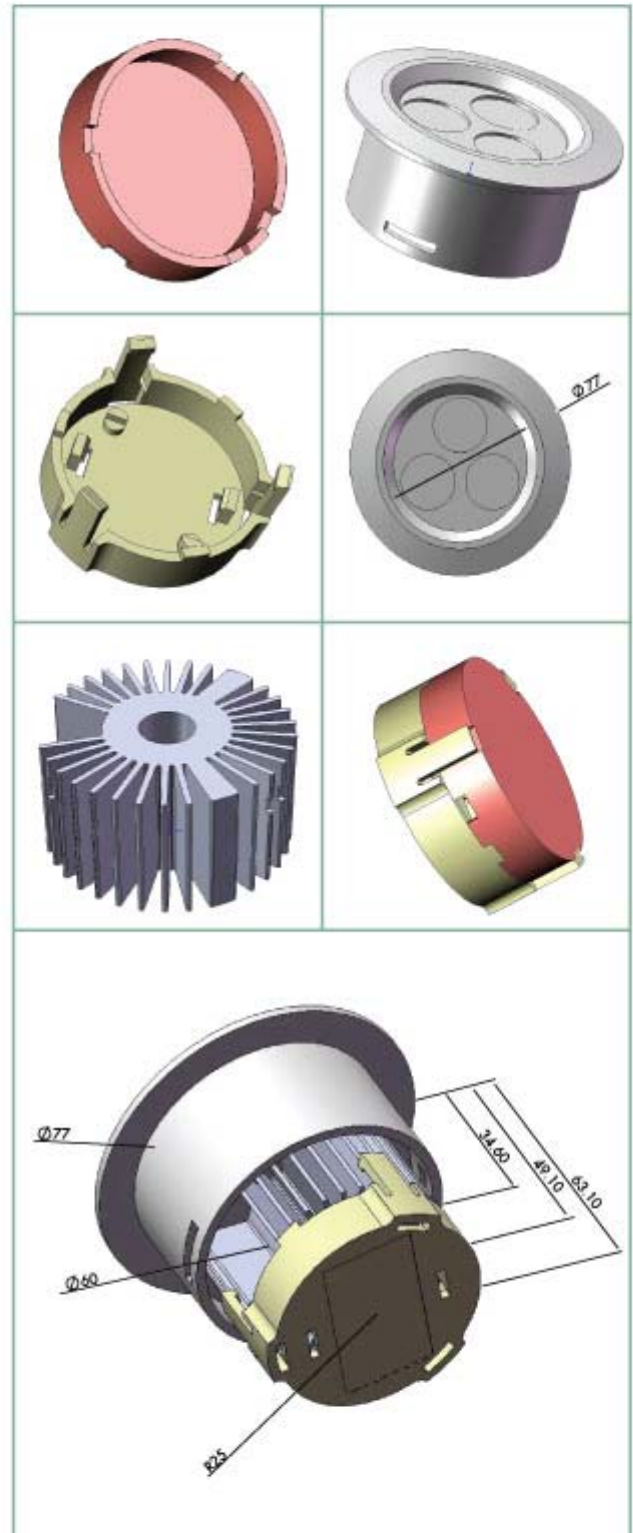
Options (subject to MOQ)

- Dimming Driver provide full range (0 - 100%) flicker-free dimming control
- RGB tri-color Versions
- ODM and Colored Housing
- Quick-splices Connector

Evaluation Kits

Ready-to-install kits include:

3 sets of LED Downlights, 1 set of Quick-connect Junction Box, 1 M #18 AWG Wiring, 6 pcs of quick-splices connectors and a Plug-in AC-AC Power Adaptor.



ECI Engineering Limited
www.eci-eng.com